



RCR Industrial Flooring

Worldwide leader in Industrial Flooring Global Solutions



Index

RCR Industrial Flooring

Worldwide leader in Industrial Flooring Global Solutions

1. RCR Activity

2. RCR Industrial Flooring Group

3. World Tech Floor

4. RCR Brands

5. Company policy

- Customized solutions
- RCR Products

6. Main International customers

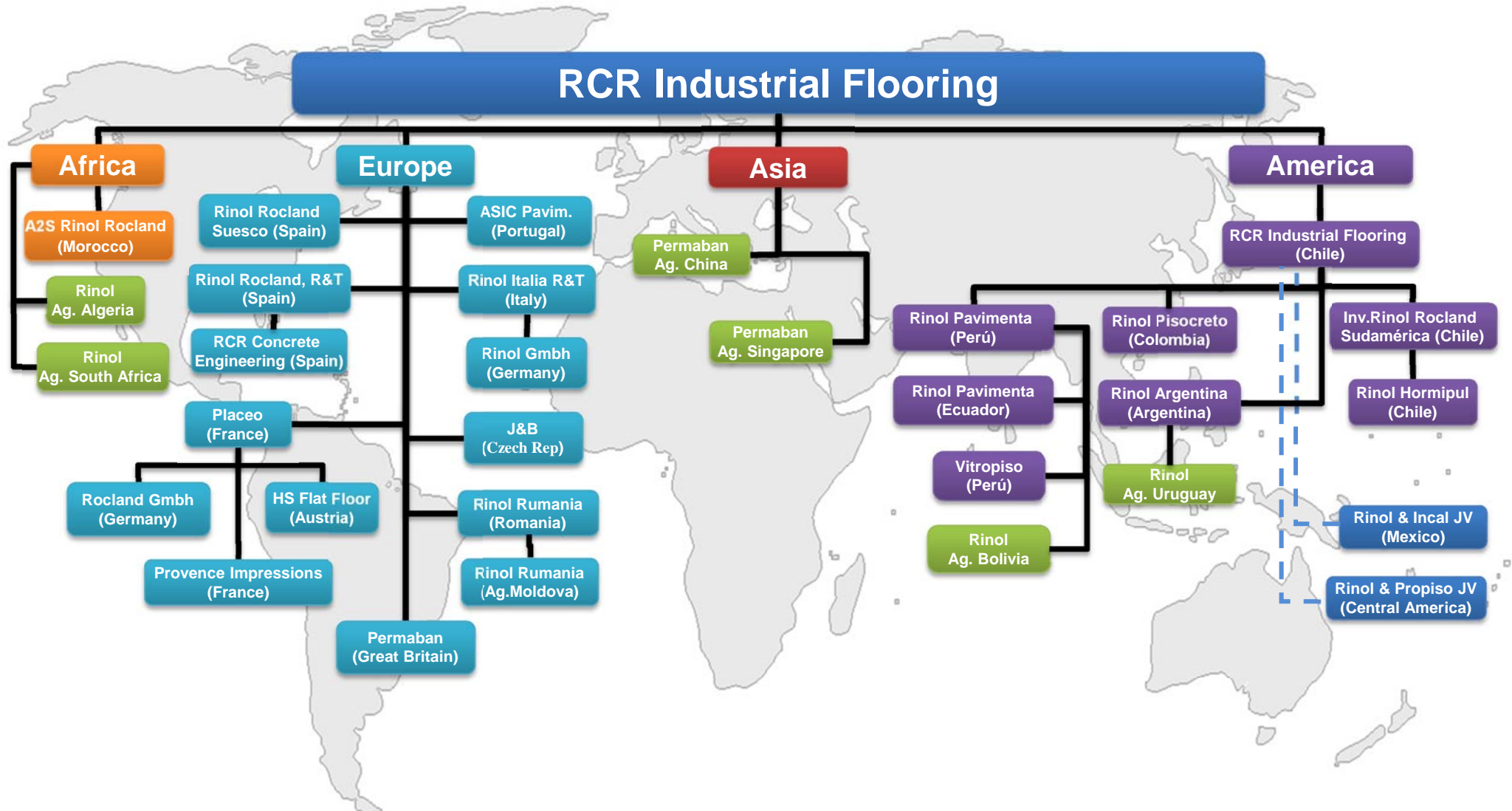
1 RCR Activity

- RCR manufactures and installs different solutions for industrial flooring that perfectly fit the customer needs.

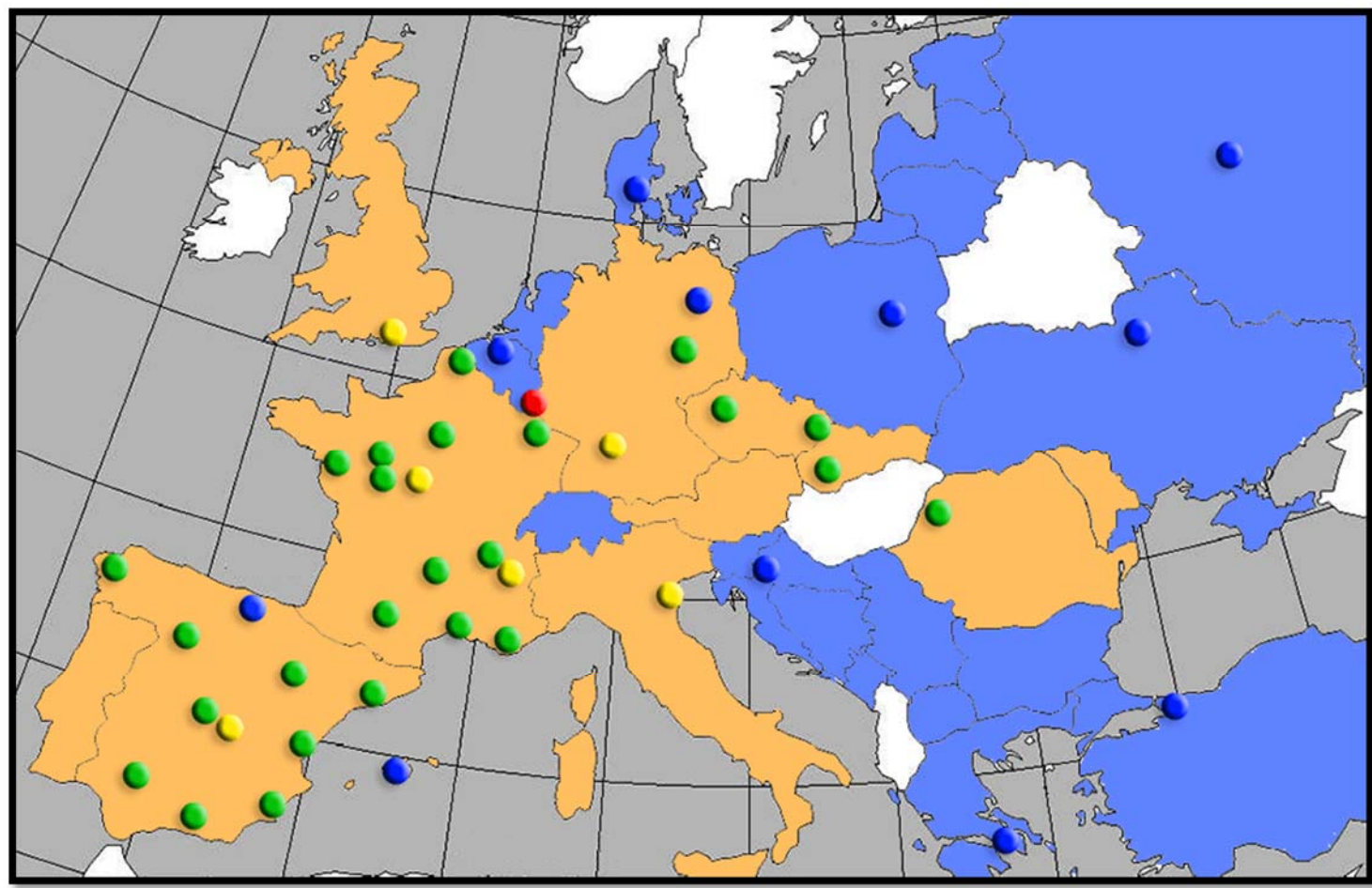
Over 50 years of experience in the flooring sector allows us to offer a complete range of solutions fully guaranteed in:

- Flooring
- Acrylic Mortar
- Magnesite coating
- Synthetic resins

2 RCR Industrial Flooring group



2 RCR Industrial Flooring Group in Europe

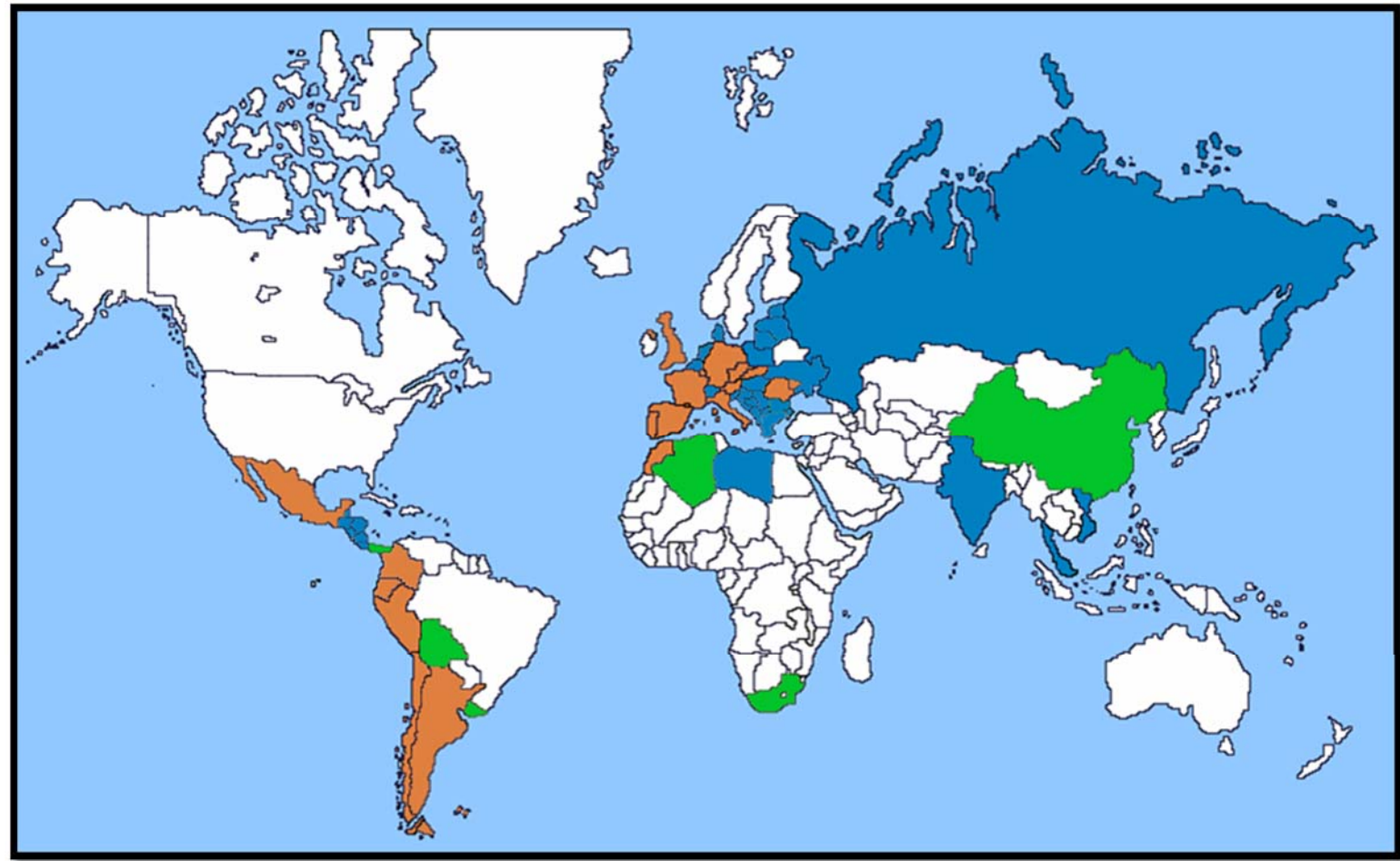


RCR Companies	
Spain	Portugal
France	Italy
Romania	Germany
Czech Rep.	Slovakia
Austria	Moldova
England	Holand

Collaboration agreements	
Russia	Ukraine
Turkey	Greece
Bulgaria	Serbia
Bosnia	Croacia
Montenegro	Denmark
Belgium	Poland
Lithuania	Latvia
Estonia	

- RCR Headquarters
- Sales offices
- Commercial agents
- Factories

2 RCR Industrial Flooring Group. Situation



RCR Companies

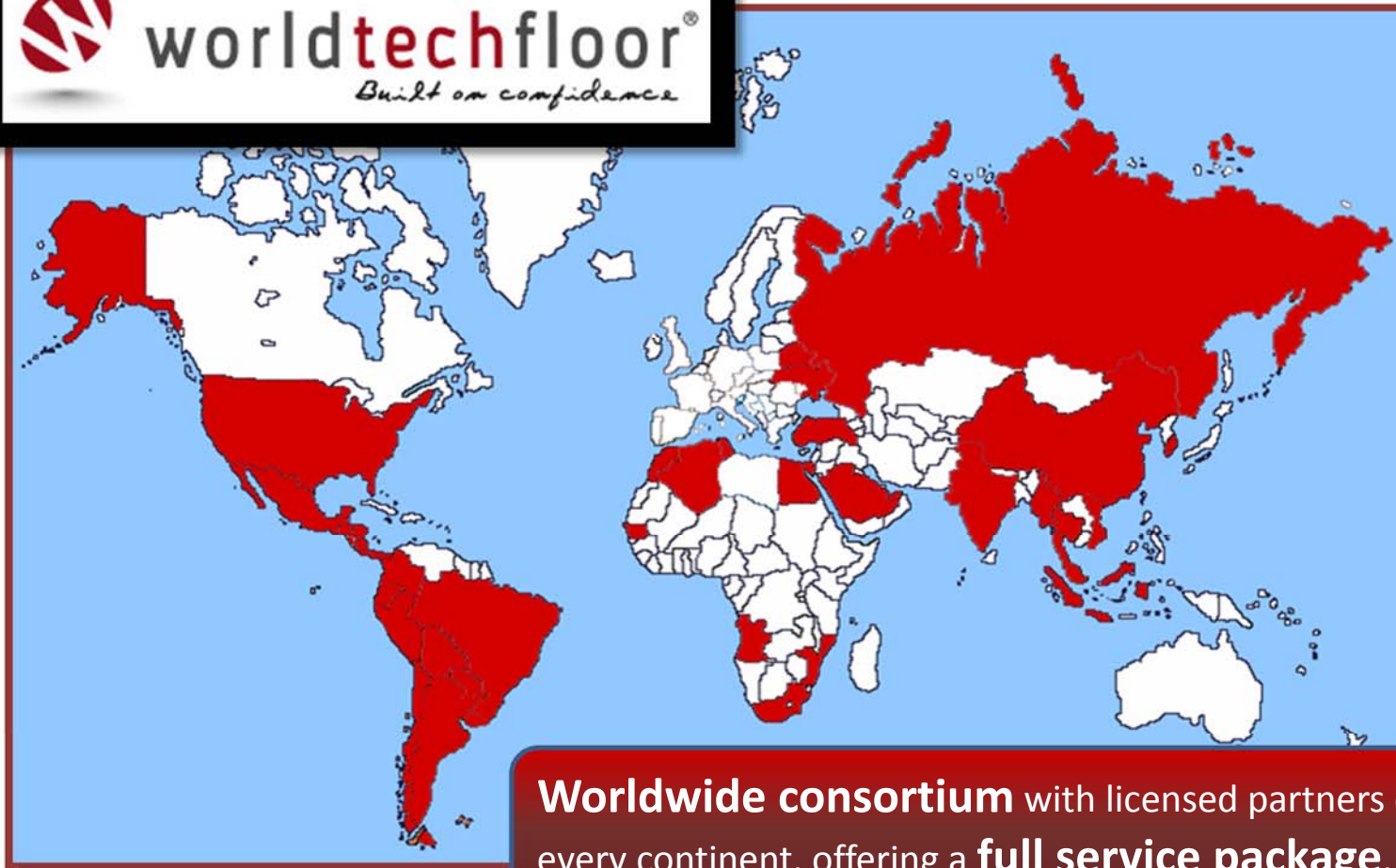
Collaboration Agreements

RCR Commercial Agents

RCR Industrial Flooring

Worldwide leader in Industrial Flooring Global Solutions

3 WorldTechFloor



Worldwide consortium with licensed partners on every continent, offering a **full service package**.



MONOFLOOR



4 RCR Brands



Other RCR brands: Duralit, IVH, Fass Boden, Chemolit

5 Company Policy

Our system "**ALL IN ONE**" combines the know-how of ROCLAND, RINOL letting us offer full service to the customer, from the design and conception of the project to the final achievement, at every stage of the process:

-Customized solutions

Identification of customer's needs
Selection of flooring methods
Design of specific solutions

-Products

Research and development
Production of materials (synthetic resin, magnesia, hardeners)
under **ISO 9001**

-Application

Experience, knowledge and methodology
Qualified personnel
Specific technology applied to Industrial flooring

-Maintenance

Specific cleaning products



5 Customized solutions



CÁLCULO DE SOLERA VIGA FINITA SOBRE APOYO CONTINUO ELASTICO

FECHA: 28/09/2017
 OBRA: RINOL BARETEC
 CARGA: Pavimento Sin Adhesivos
 SENTIDO: DE

Distancia entre pilares: $L = 11.00 \text{ m}$
 Espesor de la solera: $H = 0.180 \text{ m}$
 Índice de fondeo: $C = 20.000 \text{ MPa}$
 Clasificación de pavimento: $S = 3$
 Longitud elástica: $L_e = 1.87 \text{ m}$
 Coeficiente de rozamiento: $\mu = 0.51$

Distancia entre las juntas de solera = 6.01

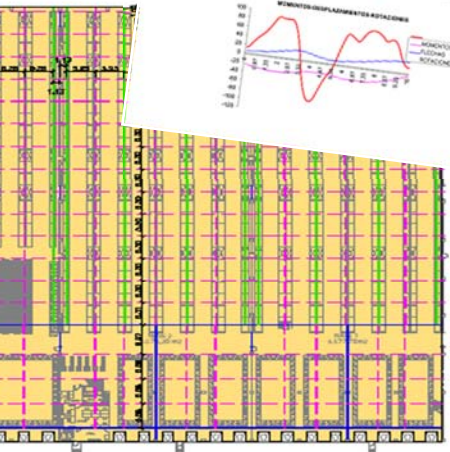
Carga (k)	Distancia entre pilares (m)	Módulo elástico (MPa)	Long. elástica (m)	Proyección (m)	Tamaño (mm)
1	102.000	20.000	0.000	0.000	1.500
2	174.000	0.070	0.000	1.000	302.000
3	157.000	0.070	0.000	1.000	302.000
4	164.000	0.070	0.000	1.000	302.000
5	160.000	0.070	0.000	1.000	302.000
6	162.000	0.070	0.000	1.000	302.000
7	162.000	0.070	0.000	1.000	302.000
8	160.000	0.070	0.000	1.000	302.000
9	162.000	0.070	0.000	1.000	302.000
10	160.000	0.070	0.000	1.000	302.000
11	157.000	0.070	0.000	1.000	302.000

GRANCO PARA UNA LINEA DE CARGA DE

REINFORZAMIENTO DE LA SOLERA

Choosing the most suitable industrial flooring is a very important decision.

To succeed in this purpose, a team of RCR Professional Engineers with recognized experience advice and support the customers in the design of their project. Technical support, Design, Calculation, etc. (KNOW-HOW)



LEYENDA DE JUNTAS

—	JUNTA TIPO DELTA JOINT
—	JUNTA DE RETRACCIÓN
—	JUNTA DE CONSTRUCCIÓN TRADICIONAL

PROYECTO: PAVIMENTO INDUSTRIAL

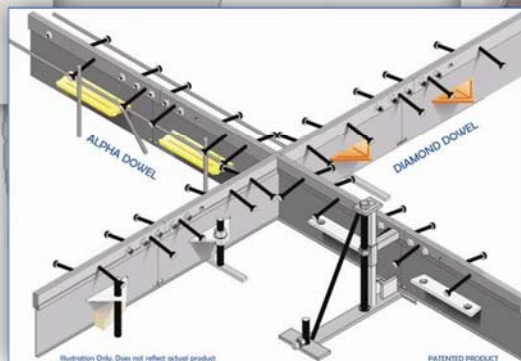
FECHA: 28/09/2017

PROYECTISTA: RINOL

VERIFICADO: [Logo]

APROBADO: [Logo]

5 RCR Products



- Choosing the most suitable industrial flooring is a very important decision.
- RCR provides customers of a wide catalogue of **flooring products** (Hardeners, cement-based, epoxy resin, poliurethane, metacrylat, acrylic mortar and others. Fibres, additivs, joint treatment, surface treatments, etc.)

5 RCR Factories



5 RCR Products

RCR Industrial Flooring

Worldwide leader in Industrial Flooring Global Solutions

RCR Trade Marks for Floor Hardener Systems:

QUALIROC

QUALIDUR

QUALITOP

QUALITOP COLOR

QUALITOP MASTER

QUALITOP METAL

QUALITOP DISPERSIVE

INDURIT



5 RCR Products

RCR Trade Marks for Fibres:

ROC FIBRAS HT

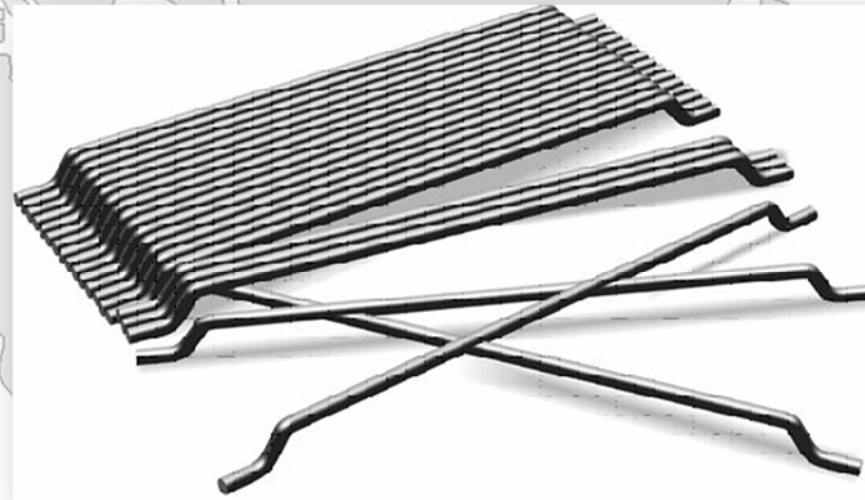
EUROSTEEL

TWINCONE

ROC FIBRAS

TWINPLATE

IVX



5 RCR Products

RCR Industrial Flooring

Worldwide leader in Industrial Flooring Global Solutions

RCR Trade Marks for Coatings:

- RINOL SEALING
- RINOL STANDARD
- RINOL ALLROUNDER
- RINOL SAFETY
- RINOL CONDUCTIVE
- RINOL ETEC
- RINOL DESIGN
- RINOL EXQUISITE
- RINOL HEAVY DUTY
- RINOL MORTAR
- RINOL SOLID
- RINOL CRYL
- RINOL COMFORT
- SUELASTIC
- DURALIT



5 RCR Products

RCR Trade Marks for Joints:

ALPHAJOINT F

ALPHAJOINT 4010

ALPHAJOINT C

ALPHAJOINT CLASSIC F

ALPHAJOINT CLASSIC 4010

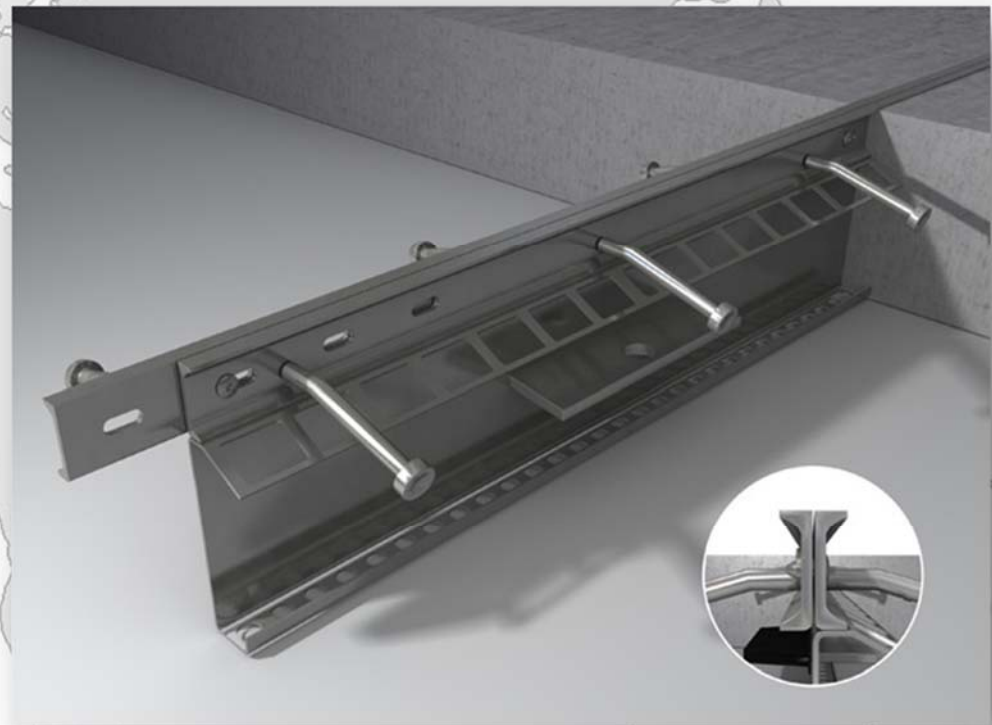
ALPHAJOINT CLASSIC C

ALPHASLIDE

BETAJOINT

STRIPOINT

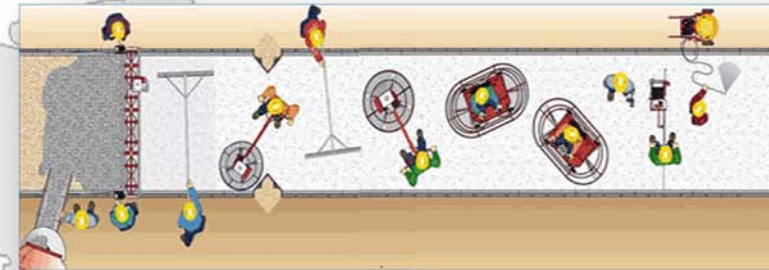
PERMASTEEL



RCR Industrial Flooring

Worldwide leader in Industrial Flooring Global Solutions

5 Application



Execution of the optimum solution, materials are prepared and applied by our own highly qualified teams, using the most accurate machinery and tools

In order to improve our service, quality and guarantee to our customers, we have developed the **RINOL SYSTEMS** an accurate method to define the products required, the mixing rates and execution procedures controls for every specific solution.

These **controls inspection** assure the quality on the selected products, the design and the installation



6 Main International Customers

